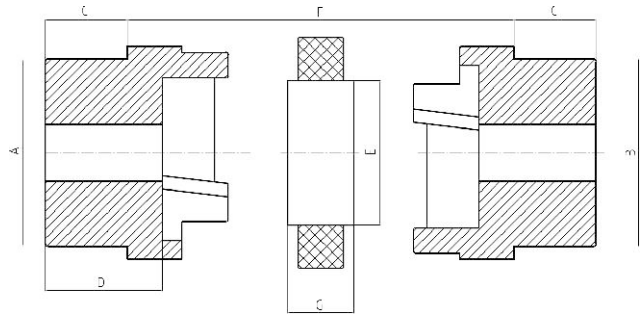




GOODWILL

HRC Flexible Coupling



FLANGE-CAST IRON

INSERT-RUBBER

HRC-standard straight bore series(lengthen type)

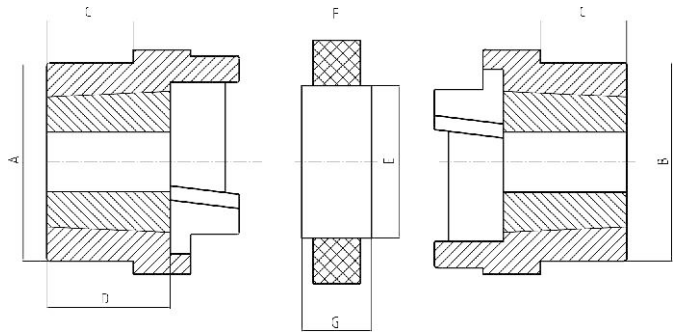
TYPE	MAX BORE		DIMENSIONS								MASS KG
	MM	INS	A	B	E	F	G	C	D	L	
70	32	1 1/4	69	60	31	25	18	20.0	23.5	65	
90	42	1 5/8	85	70	32	30.5	22.5	26.0	30.0	82.5	
110	55	2 1/8	112	100	45	45	29	37.0	45.0	119.0	
130	60	2 3/8	130	105	50	53	36	47.0	55.5	147.0	
150	70	2 3/4	150	115	62	60	40	50.0	60.0	160.0	
180	80	3 1/8	180	125	77	73	49	58.0	70.0	189.0	
230	100	4"	225	155	99	85.5	59.5	77.0	90.0	239.5	
280	130	5"	275	206	119	105.5	74.5	90.0	105.5	285.5	

HRC-standard straight bore series

TYPE	MAX BORE		DIMENSIONS								MASS KG
	MM	INS	A	B	E	F	G	C	D	L	
70	32	1 1/4	69	60	31	25	18	20.0	23.5	65	
90	42	1 5/8	85	70	32	30.5	22.5	19.5	23.5	69.5	
110	55	2 1/8	112	100	45	45	29	18.5	26.5	82	
130	60	2 3/8	130	105	50	53	36	18.0	26.5	89	
150	70	2 3/4	150	115	62	60	40	23.5	33.5	107	
180	80	3 1/8	180	125	77	73	49	34.5	46.5	142	
230	100	4"	225	155	99	85.5	59.5	39.5	52.5	164.5	
280	130	5"	275	206	119	105.5	74.5	51.0	66.5	207.5	

Flexible Coupling

HRC Flexible Coupling



FLANGE-CAST IRON

INSERT-RUBBER

HRC-Taper bore universal series

BTL

TYPE	BUSH	MAX BORE		DIMENSIONS									MASS KG
		MM	INS	A	B	E	F	G	C	D	J	L	
70	1008	25	1	69	60	31	25	18	20.0	23.5	29	65	1.00
90	1108	28	1.18	85	70	32	30.5	22.5	19.5	23.5	29	69.5	1.78
110	1610	42	1.58	112	100	45	45	29	18.5	26.5	38	82	5.00
130	1610	42	1.58	130	105	50	53	36	18.0	26.5	38	89	5.46
150	2012	50	2	150	115	62	60	40	23.5	33.5	42	107	7.11
180	2517	60	2.12	180	125	77	73	49	34.5	46.5	48	142	16.6
230	3020	75	3	225	155	99	85.5	59.5	39.5	52.5	55	164.5	26.0
280	3525	100	4	275	206	119	105.5	74.5	51.0	66.5	67	207.5	50.0

J-the wrench clearance required for tightening and loosening the bush on the shaft.