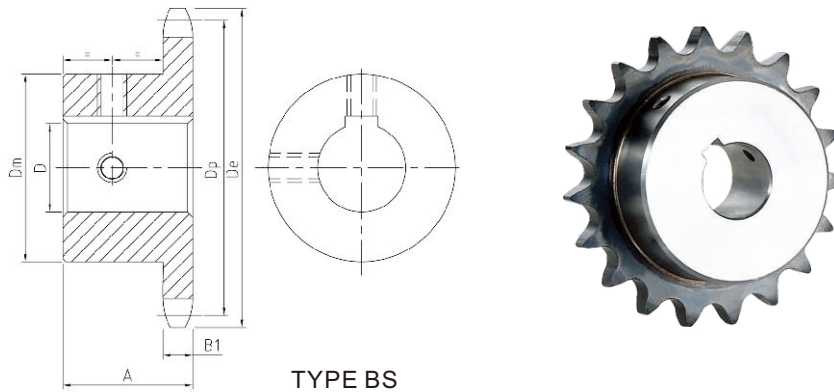


No.35 | Finished Bore Sprockets

- Pitch $\frac{3}{8}$ "
- Roller ϕ 0.200"
- Tooth width B1 0.168"



Single-Type BS-2 Setscrews-Bored To Size

No. Teeth	Part Number	De	H	Weight Lbs. (Approx)	Stock Finished Bores Includes Keyway and 2 Setscrews
9	35BS9	1.260	$\frac{3}{4}$.10	★ $\frac{7}{8}$
10	35BS10	1.380	$\frac{3}{4}$.11	★ $\frac{7}{8}$ — ★ $\frac{1}{2}$ — $\frac{1}{8}$
11	35BS11	1.500	$\frac{3}{4}$.15	★ $\frac{7}{8}$ — ★ $\frac{1}{2}$ — $\frac{1}{8}$ — $\frac{3}{4}$
12	35BS12	1.630	$\frac{3}{4}$.18	— ★ $\frac{1}{2}$ — $\frac{5}{8}$ — $\frac{1}{8}$
13	35BS13	1.750	$\frac{3}{4}$.20	— ★ $\frac{1}{2}$ — $\frac{5}{8}$ — $\frac{3}{4}$
14	35BS14	1.870	$\frac{3}{4}$.22	— ★ $\frac{1}{2}$ — $\frac{5}{8}$ — $\frac{3}{4}$
15	35BS15	1.990	$\frac{3}{4}$.24	— ★ $\frac{1}{2}$ — $\frac{5}{8}$ — $\frac{3}{4}$ — $\frac{7}{8}$ — 1
16	35BS16	2.110	$\frac{3}{4}$.29	— ★ $\frac{1}{2}$ — $\frac{5}{8}$ — $\frac{3}{4}$ — $\frac{7}{8}$ — 1
17	35BS17	2.230	$\frac{3}{4}$.36	— ★ $\frac{1}{2}$ — $\frac{5}{8}$ — $\frac{3}{4}$ — $\frac{7}{8}$ — 1
18	35BS18	2.350	$\frac{3}{4}$.39	— ★ $\frac{1}{2}$ — $\frac{5}{8}$ — $\frac{3}{4}$ — $\frac{7}{8}$ — 1
19	35BS19	2.470	$\frac{3}{4}$.44	— ★ $\frac{1}{2}$ — $\frac{5}{8}$ — $\frac{3}{4}$ — — — 1
20	35BS20	2.590	$\frac{3}{4}$.51	— ★ $\frac{1}{2}$ — $\frac{5}{8}$ — $\frac{3}{4}$ — — — 1
21	35BS21	2.710	$\frac{7}{8}$.75	— ★ $\frac{1}{2}$ — $\frac{5}{8}$ — $\frac{3}{4}$ — — — 1
22	35BS22	2.830	$\frac{7}{8}$.78	— ★ $\frac{1}{2}$ — $\frac{5}{8}$ — $\frac{3}{4}$ — — — 1
23	35BS23	2.950	$\frac{7}{8}$.78	— ★ $\frac{1}{2}$ — $\frac{5}{8}$ — $\frac{3}{4}$ — — — 1
24	35BS24	3.070	$\frac{7}{8}$.79	— ★ $\frac{1}{2}$ — $\frac{5}{8}$ — $\frac{3}{4}$ — — — 1
25	35BS25	3.190	$\frac{7}{8}$.80	— ★ $\frac{1}{2}$ — $\frac{5}{8}$ — $\frac{3}{4}$ — — — 1
26	35BS26	3.310	$\frac{7}{8}$.84	— $\frac{5}{8}$ — $\frac{3}{4}$ — $\frac{7}{8}$ — 1 — $\frac{1}{8}$ — $\frac{1}{16}$ — $\frac{1}{4}$
27	35BS27	3.430	$\frac{7}{8}$.88	— $\frac{5}{8}$ — $\frac{3}{4}$ — $\frac{7}{8}$ — 1 — $\frac{1}{8}$ — $\frac{1}{16}$ — $\frac{1}{4}$
28	35BS28	3.550	$\frac{7}{8}$.86	— $\frac{5}{8}$ — $\frac{3}{4}$ — $\frac{7}{8}$ — 1 — $\frac{1}{8}$ — $\frac{1}{16}$ — $\frac{1}{4}$
30	35BS30	3.790	$\frac{7}{8}$.96	— $\frac{5}{8}$ — $\frac{3}{4}$ — $\frac{7}{8}$ — 1 — $\frac{1}{8}$ — $\frac{1}{16}$ — $\frac{1}{4}$
32	35BS32	4.030	$\frac{7}{8}$	1.14	— $\frac{5}{8}$ — $\frac{3}{4}$ — $\frac{7}{8}$ — 1 — $\frac{1}{8}$ — $\frac{1}{16}$ — $\frac{1}{4}$
35	35BS35	4.390	1	1.38	— $\frac{5}{8}$ — $\frac{3}{4}$ — $\frac{7}{8}$ — 1 — $\frac{1}{8}$ — $\frac{1}{16}$ — $\frac{1}{4}$
36	35BS36	4.510	1	1.41	— $\frac{5}{8}$ — $\frac{3}{4}$ — $\frac{7}{8}$ — 1 — $\frac{1}{8}$ — $\frac{1}{16}$ — $\frac{1}{4}$
40	35BS40	4.990	1	1.56	— $\frac{5}{8}$ — $\frac{3}{4}$ — $\frac{7}{8}$ — 1 — $\frac{1}{8}$ — $\frac{1}{16}$ — $\frac{1}{4}$
42	35BS42	5.230	1	1.64	— $\frac{5}{8}$ — $\frac{3}{4}$ — $\frac{7}{8}$ — 1 — $\frac{1}{8}$ — $\frac{1}{16}$ — $\frac{1}{4}$
45	35BS45	5.590	1	1.74	— $\frac{5}{8}$ — $\frac{3}{4}$ — $\frac{7}{8}$ — 1 — $\frac{1}{8}$ — $\frac{1}{16}$ — $\frac{1}{4}$
48	35BS48	5.950	1	1.86	— $\frac{5}{8}$ — $\frac{3}{4}$ — $\frac{7}{8}$ — 1 — $\frac{1}{8}$ — $\frac{1}{16}$ — $\frac{1}{4}$
54	35BS54	6.660	1	1.98	— $\frac{5}{8}$ — $\frac{3}{4}$ — $\frac{7}{8}$ — 1 — $\frac{1}{8}$ — $\frac{1}{16}$ — $\frac{1}{4}$
60	35BS60	7.380	1	2.34	— $\frac{5}{8}$ — $\frac{3}{4}$ — $\frac{7}{8}$ — 1 — $\frac{1}{8}$ — $\frac{1}{16}$ — $\frac{1}{4}$
70	35BS70	8.580	1	3.14	— $\frac{3}{4}$ — $\frac{7}{8}$ — 1 — $\frac{1}{8}$ — $\frac{1}{16}$ — $\frac{1}{4}$
72	35BS72	8.810	1	3.30	— $\frac{3}{4}$ — $\frac{7}{8}$ — 1 — $\frac{1}{8}$ — $\frac{1}{16}$ — $\frac{1}{4}$
80	35BS80	9.770	1	3.94	— $\frac{3}{4}$ — $\frac{7}{8}$ — 1 — $\frac{1}{8}$ — $\frac{1}{16}$ — $\frac{1}{4}$
84	35BS84	10.250	1	4.26	— $\frac{3}{4}$ — $\frac{7}{8}$ — 1 — $\frac{1}{8}$ — $\frac{1}{16}$ — $\frac{1}{4}$
96	35BS96	11.680	1	5.22	— $\frac{3}{4}$ — $\frac{7}{8}$ — 1 — $\frac{1}{8}$ — $\frac{1}{16}$ — $\frac{1}{4}$
112	35BS112	13.590	1	6.50	— $\frac{3}{4}$ — $\frac{7}{8}$ — 1 — $\frac{1}{8}$ — $\frac{1}{16}$ — $\frac{1}{4}$

★Indicates no keyway.

$\frac{2}{4}$ " setscrews only in $\frac{1}{2}$ " & $\frac{3}{8}$ " bore.

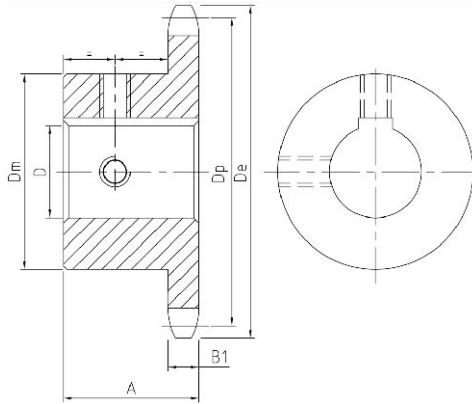
Keyway with Setscrew at 90°

Hub diameters vary to suit different bore sizes.

NOTE:KEYWAY IS ON CENTER LINE OF TOOTH.

No.35 | Finished Bore Sprockets |

- Pitch $\frac{3}{8}$ "
- Roller ϕ 0.200"
- Tooth width B1 0.168"



TYPE BS

No.35-Hardened Teeth-2 Setscrews-Bored To Size

No. Teeth	Part Number	De	H	Weight Lbs. (Approx)	Stock Finished Bores Includes Keyway and 2 Setscrews
9	35BS9HT	1.260	$\frac{3}{4}$.10	★ $\frac{7}{8}$
10	35BS10HT	1.380	$\frac{3}{4}$.11	★ $\frac{7}{8}$ — ★ $\frac{1}{2}$ — t $\frac{5}{8}$
11	35BS11HT	1.500	$\frac{3}{4}$.15	★ $\frac{7}{8}$ — ★ $\frac{1}{2}$ — t $\frac{5}{8}$ — t $\frac{3}{4}$
12	35BS12HT	1.630	$\frac{3}{4}$.18	— ★ $\frac{1}{2}$ — $\frac{5}{8}$ — $\frac{3}{4}$
13	35BS13HT	1.750	$\frac{3}{4}$.20	— ★ $\frac{1}{2}$ — $\frac{5}{8}$ — $\frac{3}{4}$
14	35BS14HT	1.870	$\frac{3}{4}$.22	— ★ $\frac{1}{2}$ — $\frac{5}{8}$ — $\frac{3}{4}$
15	35BS15HT	1.990	$\frac{3}{4}$.24	— ★ $\frac{1}{2}$ — $\frac{5}{8}$ — $\frac{3}{4}$ — $\frac{7}{8}$ — 1
16	35BS16HT	2.110	$\frac{3}{4}$.29	— ★ $\frac{1}{2}$ — $\frac{5}{8}$ — $\frac{3}{4}$ — $\frac{7}{8}$ — 1
17	35BS17HT	2.230	$\frac{3}{4}$.36	— ★ $\frac{1}{2}$ — $\frac{5}{8}$ — $\frac{3}{4}$ — $\frac{7}{8}$ — 1
18	35BS18HT	2.350	$\frac{3}{4}$.39	— ★ $\frac{1}{2}$ — $\frac{5}{8}$ — $\frac{3}{4}$ — $\frac{7}{8}$ — 1
19	35BS19HT	2.470	$\frac{3}{4}$.44	$\frac{5}{8}$ — $\frac{3}{4}$ — — — 1
20	35BS20HT	2.590	$\frac{3}{4}$.51	$\frac{5}{8}$ $\frac{3}{4}$ — — — 1
21	35BS21HT	2.710	$\frac{7}{8}$.75	$\frac{5}{8}$ $\frac{3}{4}$ — — — 1
22	35BS22HT	2.830	$\frac{7}{8}$.76	$\frac{5}{8}$ $\frac{3}{4}$ — — — 1
23	35BS23HT	2.950	$\frac{7}{8}$.78	$\frac{5}{8}$ $\frac{3}{4}$ — — — 1
24	35BS24HT	3.070	$\frac{7}{8}$.79	$\frac{5}{8}$ $\frac{3}{4}$ — — — 1
25	35BS25HT	3.190	$\frac{7}{8}$.80	$\frac{5}{8}$ $\frac{3}{4}$ — — — 1
26	35BS26HT	3.310	$\frac{7}{8}$.84	$\frac{5}{8}$ $\frac{3}{4}$ — — — 1
28	35BS28HT	3.550	$\frac{7}{8}$.88	$\frac{5}{8}$ $\frac{3}{4}$ — — — 1
30	35BS30HT	3.790	$\frac{7}{8}$.96	$\frac{5}{8}$ $\frac{3}{4}$ — — — 1

★Indicates no keyway.

NOTE:KEYWAY IS ON CENTER LINE OF TOOTH.

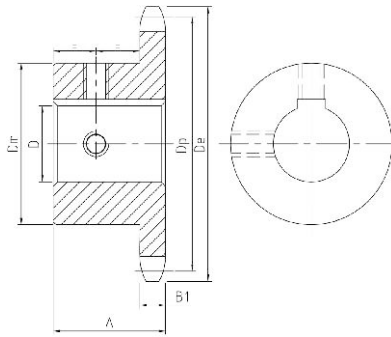
$\frac{2}{4}$ " setscrews only in $\frac{1}{2}$ " & $\frac{3}{8}$ " bore at 90°
Setscrews at 90° and 180° to Key.

Part Stock hardened teeth sprockets afford longer chain and sprocket life. Hardened teeth on the smaller sprocket of a roller chain drive are recommended if the drive ratio is four to one or greater or if the smaller sprocket has 24 teeth or less and is running at a speed of over 600 R.P.M.

Finished Bore Sprockets

No.41 | Finished Bore Sprockets

- Pitch $1\frac{1}{2}''$
- Roller ϕ 0.306''
- Tooth width B1 0.227''



TYPE BS



Single-Type BS-2 Setscrews-Bored To Size

No. Teeth	Part Number	De	H	Weight Lbs. (Approx)	Stock Finished Bores Includes Keyway and 2 Setscrews
9	41BS9	1.670	$\frac{7}{8}$.20	★ $\frac{7}{2}$ — $\frac{5}{8}$
10	41BS10	1.840	$\frac{7}{8}$.25	★ $\frac{7}{2}$ — $\frac{5}{8}$
11	41BS11	2.000	$\frac{7}{8}$.32	★ $\frac{7}{2}$ — $\frac{5}{8}$ — $\frac{3}{4}$
12	41BS12	2.170	$\frac{7}{8}$.33	★ $\frac{7}{2}$ — $\frac{5}{8}$ — $\frac{3}{4}$ — $\frac{7}{8}$
13	41BS13	2.330	$\frac{7}{8}$.43	★ $\frac{7}{2}$ — $\frac{5}{8}$ — $\frac{3}{4}$ — $\frac{7}{8}$ — 1
14	41BS14	2.490	$\frac{7}{8}$.48	★ $\frac{7}{2}$ — $\frac{5}{8}$ — $\frac{3}{4}$ — $\frac{7}{8}$ — 1
15	41BS15	2.650	$\frac{7}{8}$.59	★ $\frac{7}{2}$ — $\frac{5}{8}$ — $\frac{3}{4}$ — 1
16	41BS16	2.810	$\frac{7}{8}$.72	— $\frac{5}{8}$ — $\frac{3}{4}$ — 1
17	41BS17	2.980	1	1.00	— $\frac{5}{8}$ — $\frac{3}{4}$ — 1
18	41BS18	3.140	1	1.10	— $\frac{5}{8}$ — $\frac{3}{4}$ — 1
19	41BS19	3.300	1	1.21	— $\frac{5}{8}$ — $\frac{3}{4}$ — 1
20	41BS20	3.460	1	1.39	— $\frac{5}{8}$ — $\frac{3}{4}$ — 1
21	41BS21	3.620	1	1.77	— $\frac{5}{8}$ — $\frac{3}{4}$ — 1
22	41BS22	3.780	1	1.92	— $\frac{5}{8}$ — $\frac{3}{4}$ — 1
23	41BS23	3.940	1	2.18	— $\frac{5}{8}$ — $\frac{3}{4}$ — 1
24	41BS24	4.100	1	2.24	— $\frac{5}{8}$ — $\frac{3}{4}$ — 1
25	41BS25	4.260	1	2.42	— $\frac{5}{8}$ — $\frac{3}{4}$ — 1
26	41BS26	4.420	1	2.46	— $\frac{5}{8}$ — $\frac{3}{4}$ — 1
27	41BS27	4.580	1	2.52	— $\frac{5}{8}$ — $\frac{3}{4}$ — 1
28	41BS28	4.740	1	2.60	— $\frac{5}{8}$ — $\frac{3}{4}$ — 1
30	41BS30	5.060	1	2.76	— $\frac{5}{8}$ — $\frac{3}{4}$ — 1
32	41BS32	5.380	1	2.92	— $\frac{5}{8}$ — $\frac{3}{4}$ — 1
35	41BS35	5.860	1	3.08	— $\frac{5}{8}$ — $\frac{3}{4}$ — 1
36	41BS36	6.020	1	3.28	— $\frac{5}{8}$ — $\frac{3}{4}$ — 1
40	41BS40	6.650	$1\frac{1}{16}$	3.82	— $\frac{3}{4}$ — 1 — $1\frac{1}{8}$ — $1\frac{3}{16}$ — $1\frac{1}{4}$ — $1\frac{3}{8}$ — $1\frac{7}{16}$ — $1\frac{1}{2}$
42	41BS42	6.970	$1\frac{1}{16}$	3.68	— $\frac{3}{4}$ — 1 — $1\frac{1}{8}$ — $1\frac{3}{16}$ — $1\frac{1}{4}$ — $1\frac{3}{8}$ — $1\frac{7}{16}$ — $1\frac{1}{2}$
45	41BS45	7.450	$1\frac{1}{16}$	3.94	— $\frac{3}{4}$ — 1 — $1\frac{1}{8}$ — $1\frac{3}{16}$ — $1\frac{1}{4}$ — $1\frac{3}{8}$ — $1\frac{7}{16}$ — $1\frac{1}{2}$
48	41BS48	7.930	$1\frac{1}{16}$	4.68	— $\frac{3}{4}$ — 1 — $1\frac{1}{8}$ — $1\frac{3}{16}$ — $1\frac{1}{4}$ — $1\frac{3}{8}$ — $1\frac{7}{16}$ — $1\frac{1}{2}$
54	41BS54	8.890	$1\frac{1}{16}$	5.44	— $\frac{3}{4}$ — 1 — $1\frac{1}{8}$ — $1\frac{3}{16}$ — $1\frac{1}{4}$ — $1\frac{3}{8}$ — $1\frac{7}{16}$ — $1\frac{1}{2}$
60	41BS60	9.840	$1\frac{1}{16}$	6.54	— $\frac{3}{4}$ — 1 — $1\frac{1}{8}$ — $1\frac{3}{16}$ — $1\frac{1}{4}$ — $1\frac{3}{8}$ — $1\frac{7}{16}$ — $1\frac{1}{2}$
70	41BS70	11.430	$1\frac{3}{16}$	9.28	— $\frac{3}{4}$ — 1 — $1\frac{1}{8}$ — $1\frac{3}{16}$ — $1\frac{1}{4}$ — $1\frac{3}{8}$ — $1\frac{7}{16}$ — $1\frac{1}{2}$
72	41BS72	11.750	$1\frac{3}{16}$	9.38	— $\frac{3}{4}$ — 1 — $1\frac{1}{8}$ — $1\frac{3}{16}$ — $1\frac{1}{4}$ — $1\frac{3}{8}$ — $1\frac{7}{16}$ — $1\frac{1}{2}$
80	41BS80	13.030	$1\frac{3}{16}$	11.28	— $\frac{3}{4}$ — 1 — $1\frac{1}{8}$ — $1\frac{3}{16}$ — $1\frac{1}{4}$ — $1\frac{3}{8}$ — $1\frac{7}{16}$ — $1\frac{1}{2}$
84	41BS84	13.660	$1\frac{3}{16}$	11.94	— $\frac{3}{4}$ — 1 — $1\frac{1}{8}$ — $1\frac{3}{16}$ — $1\frac{1}{4}$ — $1\frac{3}{8}$ — $1\frac{7}{16}$ — $1\frac{1}{2}$
96	41BS96	15.570	$1\frac{3}{16}$	14.51	— $\frac{3}{4}$ — 1 — $1\frac{1}{8}$ — $1\frac{3}{16}$ — $1\frac{1}{4}$ — $1\frac{3}{8}$ — $1\frac{7}{16}$ — $1\frac{1}{2}$
112	41BS112	18.120	$1\frac{3}{16}$	18.81	— $\frac{3}{4}$ — 1 — $1\frac{1}{8}$ — $1\frac{3}{16}$ — $1\frac{1}{4}$ — $1\frac{3}{8}$ — $1\frac{7}{16}$ — $1\frac{1}{2}$

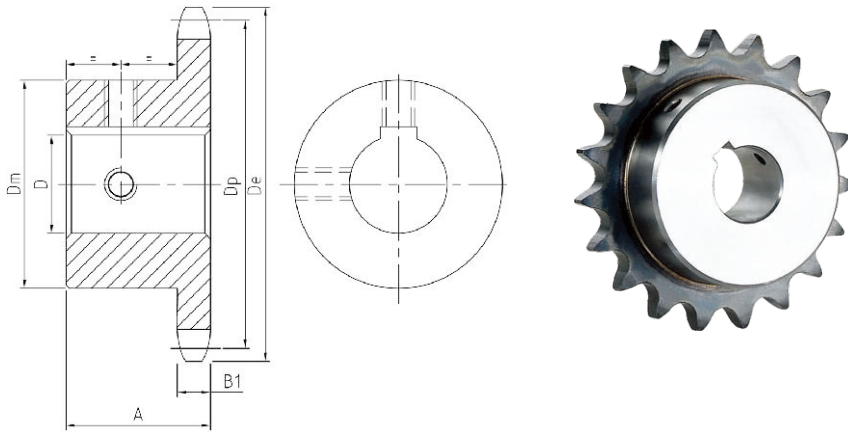
★Indicates no keyway.(2) $\frac{1}{4}''$ setscrews only in $\frac{1}{2}''$ bore.
Hub diameters vary to suit different bore sizes.

NOTE:KEYWAY IS ON CENTER LINE OF TOOTH.



No.40 | Finished Bore Sprockets

- Pitch $\frac{1}{2}$ "
- Roller ϕ 0.312"
- Tooth width B1 0.284"



TYPE BS

No.40-Hardened Teeth-2 Setscrews-Bored To Size

No. Teeth	Part Number	De	H	Weight Lbs. (Approx)	Stock Finished Bores Includes Keyway and 2 Setscrews
9	40BS9HT	1.670	$\frac{7}{8}$.16	— ★ $\frac{1}{2}$ — $\frac{5}{8}$
10	40BS10HT	1.840	$\frac{7}{8}$.24	— ★ $\frac{1}{2}$ — $\frac{5}{8}$ — $\frac{3}{4}$
11	40BS11HT	2.000	$\frac{7}{8}$.28	— ★ $\frac{1}{2}$ — $\frac{5}{8}$ — $\frac{3}{4}$ — $\frac{7}{8}$
12	40BS12HT	2.170	$\frac{7}{8}$.34	— ★ $\frac{1}{2}$ — $\frac{5}{8}$ — $\frac{3}{4}$ — $\frac{7}{8}$ — 1
13	40BS13HT	2.330	$\frac{7}{8}$.45	— ★ $\frac{1}{2}$ — $\frac{5}{8}$ — $\frac{3}{4}$ — $\frac{7}{8}$ — 1
14	40BS14HT	2.490	$\frac{7}{8}$.51	— ★ $\frac{1}{2}$ — $\frac{5}{8}$ — $\frac{3}{4}$ — $\frac{7}{8}$ — 1 — $\frac{1}{8}$
15	40BS15HT	2.650	$\frac{7}{8}$.53	— ★ $\frac{1}{2}$ — $\frac{5}{8}$ — $\frac{3}{4}$ — $\frac{7}{8}$ — 1 — $\frac{1}{8}$ — $\frac{1}{16}$ — $\frac{1}{4}$
16	40BS16HT	2.810	$\frac{7}{8}$.66	$\frac{5}{8}$ — $\frac{3}{4}$ — $\frac{7}{8}$ — 1 — $\frac{1}{8}$ — $\frac{1}{16}$ — $\frac{1}{4}$
17	40BS17HT	2.980	1	.88	$\frac{5}{8}$ — $\frac{3}{4}$ — $\frac{7}{8}$ — 1 — $\frac{1}{8}$ — $\frac{1}{16}$ — $\frac{1}{4}$
18	40BS18HT	3.140	1	1.03	$\frac{5}{8}$ — $\frac{3}{4}$ — $\frac{7}{8}$ — 1 — $\frac{1}{8}$ — $\frac{1}{16}$ — $\frac{1}{4}$ — $\frac{1}{8}$ — $\frac{1}{16}$ — $\frac{1}{2}$
19	40BS19HT	3.300	1	1.17	$\frac{5}{8}$ — $\frac{3}{4}$ — $\frac{7}{8}$ — 1 — $\frac{1}{8}$ — $\frac{1}{16}$ — $\frac{1}{4}$ — $\frac{1}{8}$ — $\frac{1}{16}$ — $\frac{1}{2}$
20	40BS20HT	3.460	1	1.33	$\frac{5}{8}$ — $\frac{3}{4}$ — $\frac{7}{8}$ — 1 — $\frac{1}{8}$ — $\frac{1}{16}$ — $\frac{1}{4}$ — $\frac{1}{8}$ — $\frac{1}{16}$ — $\frac{1}{2}$
21	40BS21HT	3.620	1	1.53	$\frac{5}{8}$ — $\frac{3}{4}$ — $\frac{7}{8}$ — 1 — $\frac{1}{8}$ — $\frac{1}{16}$ — $\frac{1}{4}$ — $\frac{1}{8}$ — $\frac{1}{16}$ — $\frac{1}{2}$
22	40BS22HT	3.780	1	1.66	$\frac{5}{8}$ — $\frac{3}{4}$ — $\frac{7}{8}$ — 1 — $\frac{1}{8}$ — $\frac{1}{16}$ — $\frac{1}{4}$ — $\frac{1}{8}$ — $\frac{1}{16}$ — $\frac{1}{2}$
23	40BS23HT	3.940	1	1.92	$\frac{5}{8}$ — $\frac{3}{4}$ — $\frac{7}{8}$ — 1 — $\frac{1}{8}$ — $\frac{1}{16}$ — $\frac{1}{4}$ — $\frac{1}{8}$ — $\frac{1}{16}$ — $\frac{1}{2}$
24	40BS24HT	4.100	1	2.10	$\frac{5}{8}$ — $\frac{3}{4}$ — $\frac{7}{8}$ — 1 — $\frac{1}{8}$ — $\frac{1}{16}$ — $\frac{1}{4}$ — $\frac{1}{8}$ — $\frac{1}{16}$ — $\frac{1}{2}$
25	40BS25HT	4.260	1	2.22	— $\frac{3}{4}$ — $\frac{7}{8}$ — 1 — $\frac{1}{8}$ — $\frac{1}{16}$ — $\frac{1}{4}$ — — $\frac{1}{16}$ — $\frac{1}{2}$
26	40BS26HT	4.420	1	2.34	— $\frac{3}{4}$ — $\frac{7}{8}$ — 1 — $\frac{1}{8}$ — $\frac{1}{16}$ — $\frac{1}{4}$ — — $\frac{1}{16}$ — $\frac{1}{2}$
28	40BS28HT	4.740	1	2.50	— $\frac{3}{4}$ — $\frac{7}{8}$ — 1 — $\frac{1}{8}$ — $\frac{1}{16}$ — $\frac{1}{4}$ — — $\frac{1}{16}$ — $\frac{1}{2}$
30	40BS30HT	5.060	1	2.70	— $\frac{3}{4}$ — $\frac{7}{8}$ — 1 — $\frac{1}{8}$ — $\frac{1}{16}$ — $\frac{1}{4}$ — — $\frac{1}{16}$ — $\frac{1}{2}$

★Indicates no keyway. 2 $\frac{1}{4}$ " setscrews only in $\frac{1}{2}$ " & $\frac{3}{8}$ " bore at 90°
Setscrews at 90° and 180° to Key.

NOTE:KEYWAY IS ON CENTER LINE OF TOOTH.

Part Stock hardened teeth sprockets afford longer chain and sprocket life .Hardened teeth on the smaller sprocket of a roller chain drive are recommended if the drive ratio is four to one or greater or if the smaller sprocket has 24 teeth or less and is running at a speed of over 600 R.P.M

Finished Bore Sprockets



GOODWILL

No.50 | Finished Bore Sprockets

- Pitch $5/8''$
- Roller ϕ 0.400''
- Tooth width B1 $0.343''$

Single-Type BS-2 Setscrews-Bored To Size

No. Teeth	Part Number	De	H	Weight Lbs. (Approx)	Stock Finished Bores Includes Keyway and 2 Setscrews
9	50BS9	2.090	1	.30	$5/8 - 3/4$
10	50BS10	2.300	1	.30	$5/8 - 3/4 - 7/8 - t1$
11	50BS11	2.500	1	.60	$5/8 - 3/4 - 7/8 - 1$
12	50BS12	2.710	1	.70	$5/8 - 3/4 - 7/8 - 1 - 1/8 - 1 1/8 - 1 1/4$
13	50BS13	2.910	1	.80	$5/8 - 3/4 - 7/8 - 1 - 1/8 - 1 1/8 - 1 1/4$
14	50BS14	3.110	1	1.00	$5/8 - 3/4 - 7/8 - 1 - 1/8 - 1 1/8 - 1 1/4$
15	50BS15	3.320	1	1.20	$5/8 - 3/4 - 7/8 - 1 - 1/8 - 1 1/8 - 1 1/4 - 1 3/8 - 1 7/8 - 1 1/2$
16	50BS16	3.520	1	1.45	$5/8 - 3/4 - 7/8 - 1 - 1/8 - 1 1/8 - 1 1/4 - 1 3/8 - 1 7/8 - 1 1/2 - 1 5/8$
17	50BS17	3.720	1	1.60	$5/8 - 3/4 - 7/8 - 1 - 1/8 - 1 1/8 - 1 1/4 - 1 3/8 - 1 7/8 - 1 1/2 - 1 5/8$
18	50BS18	3.920	1	1.90	$5/8 - 3/4 - 7/8 - 1 - 1/8 - 1 1/8 - 1 1/4 - 1 3/8 - 1 7/8 - 1 1/2 - 1 5/8$
19	50BS19	4.120	1	2.00	$5/8 - 3/4 - 7/8 - 1 - 1/8 - 1 1/8 - 1 1/4 - 1 3/8 - 1 7/8 - 1 1/2 - 1 5/8$
20	50BS20	4.320	1	2.10	$3/4 - 7/8 - 1 - 1/8 - 1 1/8 - 1 1/4 - 1 3/8 - 1 7/8 - 1 1/2 - 1 5/8$
21	50BS21	4.520	1	2.25	$3/4 - 7/8 - 1 - 1/8 - 1 1/8 - 1 1/4 - 1 3/8 - 1 7/8 - 1 1/2$
22	50BS22	4.720	1	2.40	$3/4 - 7/8 - 1 - 1/8 - 1 1/8 - 1 1/4 - 1 3/8 - 1 7/8 - 1 1/2$
23	50BS23	4.920	1	2.50	$3/4 - 7/8 - 1 - 1/8 - 1 1/8 - 1 1/4 - 1 3/8 - 1 7/8 - 1 1/2$
24	50BS24	5.120	1 1/4	3.00	$3/4 - 7/8 - 1 - 1/8 - 1 1/8 - 1 1/4 - 1 3/8 - 1 7/8 - 1 1/2$
25	50BS25	5.320	1 1/4	3.10	$3/4 - 7/8 - 1 - 1/8 - 1 1/8 - 1 1/4 - 1 3/8 - 1 7/8 - 1 1/2$
26	50BS26	5.520	1 1/4	3.30	$3/4 - 7/8 - 1 - 1/8 - 1 1/8 - 1 1/4 - 1 3/8 - 1 7/8 - 1 1/2$
27	50BS27	5.720	1 1/4	3.46	$3/4 - 7/8 - 1 - 1/8 - 1 1/8 - 1 1/4 - 1 3/8 - 1 7/8 - 1 1/2$
28	50BS28	5.920	1 1/4	3.60	$3/4 - 7/8 - 1 - 1/8 - 1 1/8 - 1 1/4 - 1 3/8 - 1 7/8 - 1 1/2$
29	50BS29	6.120	1 1/4	3.78	$3/4 - 7/8 - 1 - 1/8 - 1 1/8 - 1 1/4 - 1 3/8 - 1 7/8 - 1 1/2$
30	50BS30	6.320	1 1/4	3.90	$3/4 - 7/8 - 1 - 1/8 - 1 1/8 - 1 1/4 - 1 3/8 - 1 7/8 - 1 1/2$
31	50BS31	6.520	1 1/4	4.46	$3/4 - 7/8 - 1 - 1/8 - 1 1/8 - 1 1/4 - 1 3/8 - 1 7/8 - 1 1/2 - 1 3/4 - 1 5/8$
32	50BS32	6.720	1 1/4	4.70	$3/4 - 7/8 - 1 - 1/8 - 1 1/8 - 1 1/4 - 1 3/8 - 1 7/8 - 1 1/2 - 1 3/4 - 1 5/8$
33	50BS33	6.920	1 1/4	4.92	$3/4 - 7/8 - 1 - 1/8 - 1 1/8 - 1 1/4 - 1 3/8 - 1 7/8 - 1 1/2 - 1 3/4 - 1 5/8$
34	50BS34	7.120	1 1/4	5.06	$3/4 - 7/8 - 1 - 1/8 - 1 1/8 - 1 1/4 - 1 3/8 - 1 7/8 - 1 1/2 - 1 3/4 - 1 5/8$
35	50BS35	7.320	1 1/4	5.30	$3/4 - 7/8 - 1 - 1/8 - 1 1/8 - 1 1/4 - 1 3/8 - 1 7/8 - 1 1/2 - 1 3/4 - 1 5/8$
36	50BS36	7.520	1 1/4	5.50	$3/4 - 7/8 - 1 - 1/8 - 1 1/8 - 1 1/4 - 1 3/8 - 1 7/8 - 1 1/2 - 1 3/4 - 1 5/8$
37	50BS37	7.720	1 1/4	5.62	$3/4 - 7/8 - 1 - 1/8 - 1 1/8 - 1 1/4 - 1 3/8 - 1 7/8 - 1 1/2 - 1 3/4 - 1 5/8$
38	50BS38	7.920	1 1/4	5.80	$3/4 - 7/8 - 1 - 1/8 - 1 1/8 - 1 1/4 - 1 3/8 - 1 7/8 - 1 1/2 - 1 3/4 - 1 5/8$
39	50BS39	8.120	1 1/4	6.02	$3/4 - 7/8 - 1 - 1/8 - 1 1/8 - 1 1/4 - 1 3/8 - 1 7/8 - 1 1/2 - 1 3/4 - 1 5/8$
40	50BS40	8.320	1 1/4	6.20	$3/4 - 7/8 - 1 - 1/8 - 1 1/8 - 1 1/4 - 1 3/8 - 1 7/8 - 1 1/2 - 1 3/4 - 1 5/8$
41	50BS41	8.520	1 1/4	6.45	$3/4 - 7/8 - 1 - 1/8 - 1 1/8 - 1 1/4 - 1 3/8 - 1 7/8 - 1 1/2 - 1 3/4 - 1 5/8$
42	50BS42	8.720	1 1/4	6.68	$3/4 - 7/8 - 1 - 1/8 - 1 1/8 - 1 1/4 - 1 3/8 - 1 7/8 - 1 1/2 - 1 3/4 - 1 5/8$
43	50BS43	8.910	1 1/4	6.99	$3/4 - 7/8 - 1 - 1/8 - 1 1/8 - 1 1/4 - 1 3/8 - 1 7/8 - 1 1/2 - 1 3/4 - 1 5/8$
44	50BS44	9.110	1 1/4	7.30	$3/4 - 7/8 - 1 - 1/8 - 1 1/8 - 1 1/4 - 1 3/8 - 1 7/8 - 1 1/2 - 1 3/4 - 1 5/8$
45	50BS45	9.310	1 1/4	8.00	$3/4 - 7/8 - 1 - 1/8 - 1 1/8 - 1 1/4 - 1 3/8 - 1 7/8 - 1 1/2 - 1 3/4 - 1 5/8$
46	50BS46	9.510	1 1/4	8.51	$1 - 1/8 - 1 1/8 - 1 1/4 - 1 3/8 - 1 7/8 - 1 1/2 - 1 3/4 - 1 5/8$
47	50BS47	9.710	1 1/4	8.76	$1 - 1/8 - 1 1/8 - 1 1/4 - 1 3/8 - 1 7/8 - 1 1/2 - 1 3/4 - 1 5/8$
48	50BS48	9.910	1 1/4	9.03	$1 - 1/8 - 1 1/8 - 1 1/4 - 1 3/8 - 1 7/8 - 1 1/2 - 1 3/4 - 1 5/8$
49	50BS49	10.110	1 1/4	9.33	$1 - 1/8 - 1 1/8 - 1 1/4 - 1 3/8 - 1 7/8 - 1 1/2 - 1 3/4 - 1 5/8$
50	50BS50	10.310	1 1/4	9.63	$1 - 1/8 - 1 1/8 - 1 1/4 - 1 3/8 - 1 7/8 - 1 1/2 - 1 3/4 - 1 5/8$
51	50BS51	10.510	1 1/4	9.81	$1 - 1/8 - 1 1/8 - 1 1/4 - 1 3/8 - 1 7/8 - 1 1/2 - 1 3/4 - 1 5/8$
52	50BS52	10.710	1 1/4	9.99	$1 - 1/8 - 1 1/8 - 1 1/4 - 1 3/8 - 1 7/8 - 1 1/2 - 1 3/4 - 1 5/8$
53	50BS53	10.910	1 1/4	10.37	$1 - 1/8 - 1 1/8 - 1 1/4 - 1 3/8 - 1 7/8 - 1 1/2 - 1 3/4 - 1 5/8$
54	50BS54	11.110	1 1/4	10.75	$1 - 1/8 - 1 1/8 - 1 1/4 - 1 3/8 - 1 7/8 - 1 1/2 - 1 3/4 - 1 5/8$
55	50BS55	11.310	1 1/4	11.08	$1 - 1/8 - 1 1/8 - 1 1/4 - 1 3/8 - 1 7/8 - 1 1/2 - 1 3/4 - 1 5/8$
56	50BS56	11.500	1 1/4	11.41	$1 - 1/8 - 1 1/8 - 1 1/4 - 1 3/8 - 1 7/8 - 1 1/2 - 1 3/4 - 1 5/8$
57	50BS57	11.700	1 1/4	11.75	$1 - 1/8 - 1 1/8 - 1 1/4 - 1 3/8 - 1 7/8 - 1 1/2 - 1 3/4 - 1 5/8$
58	50BS58	11.900	1 1/4	12.08	$1 - 1/8 - 1 1/8 - 1 1/4 - 1 3/8 - 1 7/8 - 1 1/2 - 1 3/4 - 1 5/8$
59	50BS59	12.100	1 1/4	12.41	$1 - 1/8 - 1 1/8 - 1 1/4 - 1 3/8 - 1 7/8 - 1 1/2 - 1 3/4 - 1 5/8$
60	50BS60	12.300	1 1/4	13.50	$1 - 1/8 - 1 1/8 - 1 1/4 - 1 3/8 - 1 7/8 - 1 1/2 - 1 3/4 - 1 5/8$
70	50BS70	14.290	1 1/4	17.81	$1 - 1/8 - 1 1/8 - 1 1/4 - 1 3/8 - 1 7/8 - 1 1/2 - 1 3/4 - 1 5/8$
72	50BS72	14.690	1 1/4	19.13	$1 - 1/8 - 1 1/8 - 1 1/4 - 1 3/8 - 1 7/8 - 1 1/2 - 1 3/4 - 1 5/8$
80	50BS80	16.280	1 3/4	24.39	$1 - 1/8 - 1 1/8 - 1 1/4 - 1 3/8 - 1 7/8 - 1 1/2 - 1 3/4 - 1 5/8$
84	50BS84	17.080	1 3/4	25.15	$1 - 1/8 - 1 1/8 - 1 1/4 - 1 3/8 - 1 7/8 - 1 1/2 - 1 3/4 - 1 5/8$
96	50BS96	19.470	1 3/4	32.57	$1 - 1/8 - 1 1/8 - 1 1/4 - 1 3/8 - 1 7/8 - 1 1/2 - 1 3/4 - 1 5/8$
112	50BS112	22.650	1 3/4	41.65	$1 - 1/8 - 1 1/8 - 1 1/4 - 1 3/8 - 1 7/8 - 1 1/2 - 1 3/4 - 1 5/8$

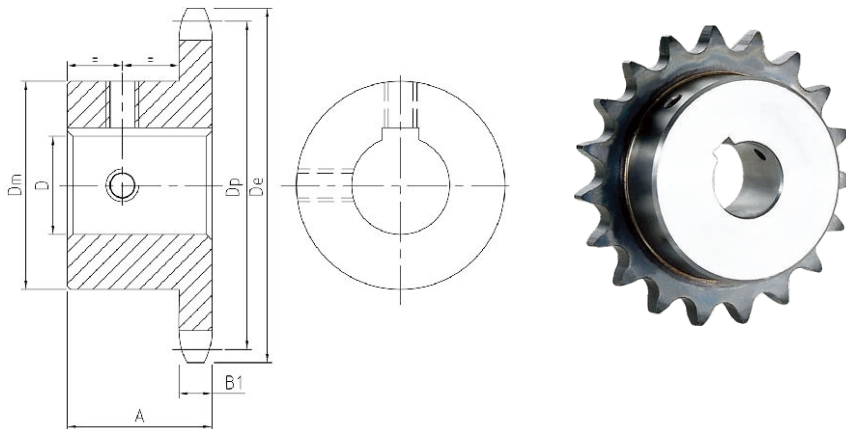
Finished Bore Sprockets

Keyway with Setscrew at 90°
Hub diameters vary to suit different bore sizes.

NOTE:KEYWAY IS ON CENTER LINE OF TOOTH.

No.50 | Finished Bore Sprockets |

- Pitch $\frac{5}{8}$ " Roller ϕ 0.400"
- Tooth width B1 0.343"



TYPE BS

No.50-Hardened Teeth-2 Setscrews-Bored To Size

No. Teeth	Part Number	De	H	Weight Lbs. (Approx)	Stock Finished Bores Includes Keyway and 2 Setscrews
9	50BS9HT	2.09	1	.3	$\frac{5}{8}$ — $\frac{3}{4}$
10	50BS10HT	2.30	1	.3	$\frac{5}{8}$ — $\frac{3}{4}$ — $\frac{7}{8}$ — t1
11	50BS11HT	2.50	1	.6	$\frac{5}{8}$ — $\frac{3}{4}$ — $\frac{7}{8}$ — 1
12	50BS12HT	2.71	1	.7	$\frac{5}{8}$ — $\frac{3}{4}$ — $\frac{7}{8}$ — 1 — $\frac{1}{8}$ — $\frac{1}{16}$ — $\frac{1}{16}$ — $\frac{1}{4}$
13	50BS13HT	2.91	1	.8	$\frac{5}{8}$ — $\frac{3}{4}$ — $\frac{7}{8}$ — 1 — $\frac{1}{8}$ — $\frac{1}{16}$ — $\frac{1}{16}$ — $\frac{1}{4}$
14	50BS14HT	3.11	1	1.0	$\frac{5}{8}$ — $\frac{3}{4}$ — $\frac{7}{8}$ — 1 — $\frac{1}{8}$ — $\frac{1}{16}$ — $\frac{1}{16}$ — $\frac{1}{4}$
15	50BS15HT	3.32	1	1.2	$\frac{5}{8}$ — $\frac{3}{4}$ — $\frac{7}{8}$ — 1 — $\frac{1}{8}$ — $\frac{1}{16}$ — $\frac{1}{16}$ — $\frac{1}{4}$ — $\frac{1}{8}$ — $\frac{1}{16}$ — $\frac{1}{2}$
16	50BS16HT	3.52	1	1.5	$\frac{5}{8}$ — $\frac{3}{4}$ — $\frac{7}{8}$ — 1 — $\frac{1}{8}$ — $\frac{1}{16}$ — $\frac{1}{16}$ — $\frac{1}{4}$ — $\frac{1}{8}$ — $\frac{1}{16}$ — $\frac{1}{2}$ — $\frac{1}{8}$
17	50BS17HT	3.72	1	1.7	$\frac{5}{8}$ — $\frac{3}{4}$ — $\frac{7}{8}$ — 1 — $\frac{1}{8}$ — $\frac{1}{16}$ — $\frac{1}{16}$ — $\frac{1}{4}$ — $\frac{1}{8}$ — $\frac{1}{16}$ — $\frac{1}{2}$ — $\frac{1}{8}$
18	50BS18HT	3.92	1	2.0	$\frac{5}{8}$ — $\frac{3}{4}$ — $\frac{7}{8}$ — 1 — $\frac{1}{8}$ — $\frac{1}{16}$ — $\frac{1}{16}$ — $\frac{1}{4}$ — $\frac{1}{8}$ — $\frac{1}{16}$ — $\frac{1}{2}$ — $\frac{1}{8}$
19	50BS19HT	4.12	1	2.2	$\frac{3}{4}$ — $\frac{7}{8}$ — 1 — $\frac{1}{8}$ — $\frac{1}{16}$ — $\frac{1}{16}$ — $\frac{1}{4}$ — $\frac{1}{8}$ — $\frac{1}{16}$ — $\frac{1}{2}$ — $\frac{1}{8}$
20	50BS20HT	4.32	1	2.5	$\frac{3}{4}$ — $\frac{7}{8}$ — 1 — $\frac{1}{8}$ — $\frac{1}{16}$ — $\frac{1}{16}$ — $\frac{1}{4}$ — $\frac{1}{8}$ — $\frac{1}{16}$ — $\frac{1}{2}$ — $\frac{1}{8}$
21	50BS21HT	4.52	1	2.6	$\frac{3}{4}$ — 1 — $\frac{1}{8}$ — $\frac{1}{16}$ — $\frac{1}{16}$ — $\frac{1}{4}$ — $\frac{1}{8}$ — $\frac{1}{16}$ — $\frac{1}{2}$
22	50BS22HT	4.72	1	2.8	$\frac{3}{4}$ — 1 — $\frac{1}{8}$ — $\frac{1}{16}$ — $\frac{1}{16}$ — $\frac{1}{4}$ — $\frac{1}{8}$ — $\frac{1}{16}$ — $\frac{1}{2}$
23	50BS23HT	4.92	1	3.2	$\frac{3}{4}$ — 1 — $\frac{1}{8}$ — $\frac{1}{16}$ — $\frac{1}{16}$ — $\frac{1}{4}$ — $\frac{1}{8}$ — $\frac{1}{16}$ — $\frac{1}{2}$
24	50BS24HT	5.12	$\frac{1}{4}$	4.0	$\frac{3}{4}$ — 1 — $\frac{1}{8}$ — $\frac{1}{16}$ — $\frac{1}{16}$ — $\frac{1}{4}$ — $\frac{1}{8}$ — $\frac{1}{16}$ — $\frac{1}{2}$

★Indicates no keyway. $\frac{2}{16}$ " setscrews only in $\frac{1}{2}$ " & $\frac{3}{8}$ " bore at 90°
Setscrews at 90° and 180° to Key.

NOTE: KEYWAY IS ON CENTER LINE OF TOOTH.

Part Stock hardened teeth sprockets afford longer chain and sprocket life .Hardened teeth on the smaller sprocket of a roller chain drive are recommended if the drive ratio is four to one or greater or if the smaller sprocket has 24 teeth or less and is running at a speed of over 600 R.P.M



GOODWILL

No.60 | Finished Bore Sprockets

- Pitch $\frac{3}{4}$ "
- Roller ϕ 0.468"
- Tooth width B1 0.459"

Single-Type BS-2 Setscrews-Bored To Size

No. Teeth	Part Number	De	H	Weight Lbs. (Approx)	Stock Finished Bores Includes Keyway and 2 Setscrews
9	60BS9	2.510	1 1/4	.6	3/4 - 7/8 - 1
10	60BS10	2.760	1 1/4	.7	3/4 - 7/8 - 1 - 1 1/8 - 1 1/4 - 1 1/2
11	60BS11	3.000	1 1/4	.9	3/4 - 7/8 - 1 - 1 1/8 - 1 1/4 - 1 1/2
11	60BS11W★	3.000	1 1/4	.8	
12	60BS12	3.250	1 1/4	1.3	3/4 - 7/8 - 1 - 1 1/8 - 1 1/4 - 1 1/2 - 1 3/4
12	60BS12W★	3.250	1 1/4	1.1	
13	60BS13	3.490	1 1/4	1.3	3/4 - 7/8 - 1 - 1 1/8 - 1 1/4 - 1 1/2 - 1 3/4 - 1 7/8 - 2
14	60BS14	3.740	1 1/4	1.6	3/4 - 7/8 - 1 - 1 1/8 - 1 1/4 - 1 1/2 - 1 3/4 - 1 7/8 - 2 - 2 1/8
15	60BS15	3.980	1 1/4	1.7	3/4 - 7/8 - 1 - 1 1/8 - 1 1/4 - 1 1/2 - 1 3/4 - 1 7/8 - 2 - 2 1/8
16	60BS16	4.220	1 1/4	2.1	3/4 - 7/8 - 1 - 1 1/8 - 1 1/4 - 1 1/2 - 1 3/4 - 1 7/8 - 2 - 2 1/8
17	60BS17	4.460	1 1/4	2.4	1 - 1 1/8 - 1 1/4 - 1 1/2 - 1 3/4 - 1 7/8 - 2 - 2 1/8
18	60BS18	4.700	1 1/4	2.6	1 - 1 1/8 - 1 1/4 - 1 1/2 - 1 3/4 - 1 7/8 - 2 - 2 1/8
18	60BS18W★	4.700	1 1/4	2.6	
19	60BS19	4.950	1 1/4	3.4	1 - 1 1/8 - 1 1/4 - 1 1/2 - 1 3/4 - 1 7/8 - 2 - 2 1/8
20	60BS20	5.190	1 1/4	3.9	1 - 1 1/8 - 1 1/4 - 1 1/2 - 1 3/4 - 1 7/8 - 2 - 2 1/8
21	60BS21	5.430	1 1/4	4.4	1 - 1 1/8 - 1 1/4 - 1 1/2 - 1 3/4 - 1 7/8 - 2 - 2 1/8
22	60BS22	5.670	1 1/4	4.7	1 - 1 1/8 - 1 1/4 - 1 1/2 - 1 3/4 - 1 7/8 - 2 - 2 1/8
23	60BS23	5.910	1 1/4	5.0	1 - 1 1/8 - 1 1/4 - 1 1/2 - 1 3/4 - 1 7/8 - 2 - 2 1/8
24	60BS24	6.150	1 1/4	5.3	1 - 1 1/8 - 1 1/4 - 1 1/2 - 1 3/4 - 1 7/8 - 2 - 2 1/8
25	60BS25	6.390	1 1/4	5.4	1 - 1 1/8 - 1 1/4 - 1 1/2 - 1 3/4 - 1 7/8 - 2 - 2 1/8
26	60BS26	6.630	1 1/4	5.8	1 - 1 1/8 - 1 1/4 - 1 1/2 - 1 3/4 - 1 7/8 - 2 - 2 1/8
27	60BS27	6.870	1 1/4	6.3	1 - 1 1/8 - 1 1/4 - 1 1/2 - 1 3/4 - 1 7/8 - 2 - 2 1/8
28	60BS28	7.110	1 1/4	6.4	1 - 1 1/8 - 1 1/4 - 1 1/2 - 1 3/4 - 1 7/8 - 2 - 2 1/8
29	60BS29	7.350	1 1/4	6.9	1 - 1 1/8 - 1 1/4 - 1 1/2 - 1 3/4 - 1 7/8 - 2 - 2 1/8
30	60BS30	7.590	1 1/4	7.1	1 - 1 1/8 - 1 1/4 - 1 1/2 - 1 3/4 - 1 7/8 - 2 - 2 1/8
31	60BS31	7.830	1 1/4	7.4	1 - 1 1/8 - 1 1/4 - 1 1/2 - 1 3/4 - 1 7/8 - 2 - 2 1/8
32	60BS32	8.070	1 1/4	7.8	1 - 1 1/8 - 1 1/4 - 1 1/2 - 1 3/4 - 1 7/8 - 2 - 2 1/8
33	60BS33	8.300	1 1/4	8.2	1 - 1 1/8 - 1 1/4 - 1 1/2 - 1 3/4 - 1 7/8 - 2 - 2 1/8
34	60BS34	8.540	1 1/4	8.5	1 - 1 1/8 - 1 1/4 - 1 1/2 - 1 3/4 - 1 7/8 - 2 - 2 1/8
35	60BS35	8.780	1 1/4	8.8	1 - 1 1/8 - 1 1/4 - 1 1/2 - 1 3/4 - 1 7/8 - 2 - 2 1/8
36	60BS36	9.020	1 1/4	9.2	1 - 1 1/8 - 1 1/4 - 1 1/2 - 1 3/4 - 1 7/8 - 2 - 2 1/8
37	60BS37	9.260	1 1/4	9.9	1 - 1 1/8 - 1 1/4 - 1 1/2 - 1 3/4 - 1 7/8 - 2 - 2 1/8
38	60BS38	9.500	1 1/4	10.5	1 - 1 1/8 - 1 1/4 - 1 1/2 - 1 3/4 - 1 7/8 - 2 - 2 1/8
39	60BS39	9.740	1 1/4	10.9	1 - 1 1/8 - 1 1/4 - 1 1/2 - 1 3/4 - 1 7/8 - 2 - 2 1/8
40	60BS40	9.980	1 1/4	11.2	1 - 1 1/8 - 1 1/4 - 1 1/2 - 1 3/4 - 1 7/8 - 2 - 2 1/8
41	60BS41	10.220	1 1/4	11.8	1 - 1 1/8 - 1 1/4 - 1 1/2 - 1 3/4 - 1 7/8 - 2 - 2 1/8
42	60BS42	10.460	1 1/4	12.4	1 - 1 1/8 - 1 1/4 - 1 1/2 - 1 3/4 - 1 7/8 - 2 - 2 1/8
43	60BS43	10.700	1 1/4	13.0	1 - 1 1/8 - 1 1/4 - 1 1/2 - 1 3/4 - 1 7/8 - 2 - 2 1/8
44	60BS44	10.940	1 1/4	13.5	1 - 1 1/8 - 1 1/4 - 1 1/2 - 1 3/4 - 1 7/8 - 2 - 2 1/8
45	60BS45	11.180	1 1/4	13.8	1 - 1 1/8 - 1 1/4 - 1 1/2 - 1 3/4 - 1 7/8 - 2 - 2 1/8
46	60BS46	11.420	1 1/4	14.1	1 - 1 1/8 - 1 1/4 - 1 1/2 - 1 3/4 - 1 7/8 - 2 - 2 1/8
47	60BS47	11.650	1 1/4	14.6	1 - 1 1/8 - 1 1/4 - 1 1/2 - 1 3/4 - 1 7/8 - 2 - 2 1/8
48	60BS48	11.890	1 1/4	15.4	1 - 1 1/8 - 1 1/4 - 1 1/2 - 1 3/4 - 1 7/8 - 2 - 2 1/8
49	60BS49	12.130	1 1/4	16.4	1 - 1 1/8 - 1 1/4 - 1 1/2 - 1 3/4 - 1 7/8 - 2 - 2 1/8
50	60BS50	12.370	1 1/4	17.3	1 - 1 1/8 - 1 1/4 - 1 1/2 - 1 3/4 - 1 7/8 - 2 - 2 1/8
51	60BS51	12.610	1 1/4	18.3	1 - 1 1/8 - 1 1/4 - 1 1/2 - 1 3/4 - 1 7/8 - 2 - 2 1/8
52	60BS52	12.850	1 1/4	19.3	1 - 1 1/8 - 1 1/4 - 1 1/2 - 1 3/4 - 1 7/8 - 2 - 2 1/8
53	60BS53	13.090	1 1/4	20.3	1 - 1 1/8 - 1 1/4 - 1 1/2 - 1 3/4 - 1 7/8 - 2 - 2 1/8
54	60BS54	13.330	1 1/4	21.0	1 - 1 1/8 - 1 1/4 - 1 1/2 - 1 3/4 - 1 7/8 - 2 - 2 1/8
55	60BS55	13.570	1 1/4	21.2	1 - 1 1/8 - 1 1/4 - 1 1/2 - 1 3/4 - 1 7/8 - 2 - 2 1/8
56	60BS56	13.810	1 1/4	21.3	1 - 1 1/8 - 1 1/4 - 1 1/2 - 1 3/4 - 1 7/8 - 2 - 2 1/8
57	60BS57	14.040	1 1/4	22.2	1 - 1 1/8 - 1 1/4 - 1 1/2 - 1 3/4 - 1 7/8 - 2 - 2 1/8
58	60BS58	14.280	1 1/4	23.0	1 - 1 1/8 - 1 1/4 - 1 1/2 - 1 3/4 - 1 7/8 - 2 - 2 1/8
59	60BS59	14.520	1 1/4	23.8	1 - 1 1/8 - 1 1/4 - 1 1/2 - 1 3/4 - 1 7/8 - 2 - 2 1/8
60	60BS60	14.760	1 1/4	25.0	1 - 1 1/8 - 1 1/4 - 1 1/2 - 1 3/4 - 1 7/8 - 2 - 2 1/8
70	60BS70	17.150	1 3/4	31.4	1 - 1 1/8 - 1 1/4 - 1 1/2 - 1 3/4 - 1 7/8 - 2 - 2 1/8
72	60BS72	17.630	2	33.5	1 - 1 1/8 - 1 1/4 - 1 1/2 - 1 3/4 - 1 7/8 - 2 - 2 1/8
80	60BS80	19.540	2	41.2	1 - 1 1/8 - 1 1/4 - 1 1/2 - 1 3/4 - 1 7/8 - 2 - 2 1/8
84	60BS84	20.490	2	45.8	1 - 1 1/8 - 1 1/4 - 1 1/2 - 1 3/4 - 1 7/8 - 2 - 2 1/8
96	60BS96	23.360	2 1/4	62.3	1 - 1 1/8 - 1 1/4 - 1 1/2 - 1 3/4 - 1 7/8 - 2 - 2 1/8
112	60BS112	27.180	2 1/4	81.1	1 - 1 1/8 - 1 1/4 - 1 1/2 - 1 3/4 - 1 7/8 - 2 - 2 1/8

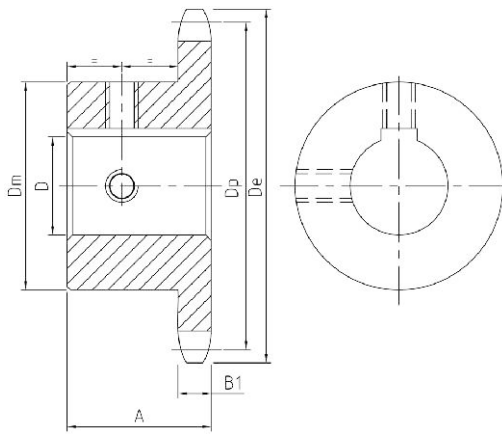
Finished Bore Sprockets

Hub diameters vary to suit different bore sizes.
★W=Winch Sprockers-KW 5/16x 3/8-SS at 90°

NOTE:KEYWAY IS ON CENTER LINE OF TOOTH.

No.60 | Finished Bore Sprockets

- Pitch $\frac{3}{4}$ "
- Roller ϕ 0.468"
- Tooth width B1 0.459"



TYPE BS

No.60-Hardened Teeth-2 Setscrews-Bored To Size

No. Teeth	Part Number	De	H	Weight Lbs. (Approx)	Stock Finished Bores Includes Keyway and 2 Setscrews
9	60BS9HT	2.51	1/4	.6	$\frac{3}{4}$ - $\frac{7}{8}$ - 1
10	60BS10HT	2.76	1/4	.7	$\frac{3}{4}$ - $\frac{7}{8}$ - 1 - $\frac{1}{8}$ - $\frac{1}{16}$ - $\frac{1}{4}$
11	60BS11HT	3.00	1/4	.9	$\frac{3}{4}$ - $\frac{7}{8}$ - 1 - $\frac{1}{8}$ - $\frac{1}{16}$ - $\frac{1}{4}$
12	60BS12HT	3.25	1/4	1.3	$\frac{3}{4}$ - $\frac{7}{8}$ - 1 - $\frac{1}{8}$ - $\frac{1}{16}$ - $\frac{1}{4}$ - $\frac{1}{16}$
13	60BS13HT	3.49	1/4	1.3	$\frac{3}{4}$ - $\frac{7}{8}$ - 1 - $\frac{1}{8}$ - $\frac{1}{16}$ - $\frac{1}{4}$ - $\frac{1}{8}$ - $\frac{1}{16}$ - $\frac{1}{2}$
14	60BS14HT	3.74	1/4	1.6	$\frac{3}{4}$ - $\frac{7}{8}$ - 1 - $\frac{1}{8}$ - $\frac{1}{16}$ - $\frac{1}{4}$ - $\frac{1}{8}$ - $\frac{1}{16}$ - $\frac{1}{2}$ - $\frac{1}{8}$
15	60BS15HT	3.98	1/4	1.7	$\frac{3}{4}$ - $\frac{7}{8}$ - 1 - $\frac{1}{8}$ - $\frac{1}{16}$ - $\frac{1}{4}$ - $\frac{1}{8}$ - $\frac{1}{16}$ - $\frac{1}{2}$ - $\frac{1}{8}$ - $\frac{1}{4}$
16	60BS16HT	4.22	1/4	2.1	$\frac{3}{4}$ - $\frac{7}{8}$ - 1 - $\frac{1}{8}$ - $\frac{1}{16}$ - $\frac{1}{4}$ - $\frac{1}{8}$ - $\frac{1}{16}$ - $\frac{1}{2}$ - $\frac{1}{8}$ - $\frac{1}{4}$ - $\frac{1}{16}$
17	60BS17HT	4.46	1/4	2.4	- 1 - $\frac{1}{8}$ - $\frac{1}{16}$ - $\frac{1}{4}$ - $\frac{1}{8}$ - $\frac{1}{16}$ - $\frac{1}{2}$ - $\frac{1}{8}$ - $\frac{1}{4}$ - $\frac{1}{16}$
18	60BS18HT	4.70	1/4	2.6	- 1 - $\frac{1}{8}$ - $\frac{1}{16}$ - $\frac{1}{4}$ - $\frac{1}{8}$ - $\frac{1}{16}$ - $\frac{1}{2}$ - $\frac{1}{8}$ - $\frac{1}{4}$ - $\frac{1}{16}$
19	60BS19HT	4.95	1/4	3.4	- 1 - $\frac{1}{8}$ - $\frac{1}{16}$ - $\frac{1}{4}$ - $\frac{1}{8}$ - $\frac{1}{16}$ - $\frac{1}{2}$ - $\frac{1}{8}$ - $\frac{1}{4}$ - $\frac{1}{16}$
20	60BS20HT	5.19	1/4	3.9	- 1 - $\frac{1}{8}$ - $\frac{1}{16}$ - $\frac{1}{4}$ - $\frac{1}{8}$ - $\frac{1}{16}$ - $\frac{1}{2}$ - $\frac{1}{8}$ - $\frac{1}{4}$ - $\frac{1}{16}$

NOTE:KEYWAY IS ON CENTER LINE OF TOOTH.

Part Stock hardened teeth sprockets afford longer chain and sprocket life .Hardened teeth on the smaller sprocket of a roller chain drive are recommended if the drive ratio is four to one or greater or if the smaller sprocket has 24 teeth or less and is running at a speed of over 600 R.P.M



GOODWILL

No.80 | Finished Bore Sprockets

- Pitch 1" Roller ϕ 0.625"
- Tooth width B1 0.575"

Single-Type BS-2 Setscrews-Bored To Size

No. Teeth	Part Number	De	H	Weight Lbs. (Approx)	Stock Finished Bores Includes Keyway and 2 Setscrews
9	80BS9	3.350	1/8	1.6	1 — 1/8 — 1 3/16 — 1 1/4
10	80BS10W★	3.680	1/8	1.7	1 — 1/8 — 1 3/16 — 1 1/4
10	80BS10	3.680	1/8	1.7	— 1 1/4
11	80BS11	4.010	1/8	1.8	1 — 1/8 — 1 3/16 — 1 1/4 — 1 3/8 — 1 7/8 — 1 1/2
11	80BS11W★	4.010	1/8	1.8	— 1 1/4
12	80BS12	4.330	1/8	3.0	1 — 1/8 — 1 3/16 — 1 1/4 — 1 3/8 — 1 7/8 — 1 1/2 — 1 5/8 — 1 3/4
12	80BS12W★	4.330	1/8	3.0	— 1 1/4
13	80BS13	4.660	1/2	3.5	1 — 1/8 — 1 3/16 — 1 1/4 — 1 3/8 — 1 7/8 — 1 1/2 — 1 5/8 — 1 3/4 — 1 7/8 — 1 5/16 2
14	80BS14	4.980	1/2	4.1	1 — 1/8 — 1 3/16 — 1 1/4 — 1 3/8 — 1 7/8 — 1 1/2 — 1 5/8 — 1 3/4 — 1 7/8 — 1 5/16 2
15	80BS15	5.300	1/2	5.2	1 — 1/8 — 1 3/16 — 1 1/4 — 1 3/8 — 1 7/8 — 1 1/2 — 1 5/8 — 1 3/4 — 1 7/8 — 1 5/16 2
15	80BS15W★	5.300	1/2	5.3	— 1 1/4
16	80BS16	5.630	1/2	5.5	1 — — 1 3/16 — 1 1/4 — 1 3/8 — 1 7/8 — 1 1/2 — 1 5/8 — 1 3/4 — — — 1 5/16 2 — 2 1/16
17	80BS17	5.950	1/2	6.0	1 — — 1 3/16 — 1 1/4 — 1 3/8 — 1 7/8 — 1 1/2 — 1 5/8 — 1 3/4 — — — 1 5/16 2 — 2 1/16 — 2 1/16
18	80BS18	6.270	1/2	6.5	1 — — 1 3/16 — 1 1/4 — 1 3/8 — 1 7/8 — 1 1/2 — 1 5/8 — 1 3/4 — — — 1 5/16 2 — 2 1/16 — 2 1/16
18	80BS18W★	6.270	1/2	6.0	— 1 1/2
19	80BS19	6.590	1/2	7.0	1 — — 1 3/16 — 1 1/4 — 1 3/8 — 1 7/8 — 1 1/2 — 1 5/8 — 1 3/4 — — — 1 5/16 2 — 2 1/16 — 2 1/16
20	80BS20	6.910	1/2	8.0	1 — — 1 3/16 — 1 1/4 — 1 3/8 — 1 7/8 — 1 1/2 — 1 5/8 — 1 3/4 — — — 1 5/16 2 — 2 1/16 — 2 1/16
21	80BS21	7.240	1/4	8.9	1 — — 1 3/16 — 1 1/4 — 1 3/8 — 1 7/8 — 1 1/2 — 1 5/8 — 1 3/4 — — — 1 5/16 2 — 2 1/16 — 2 1/16
22	80BS22	7.560	1/4	9.5	1 — — 1 3/16 — 1 1/4 — 1 3/8 — 1 7/8 — 1 1/2 — 1 5/8 — 1 3/4 — — — 1 5/16 2 — 2 1/16 — 2 1/16
23	80BS23	7.880	1/4	10.2	1 — — 1 3/16 — 1 1/4 — 1 3/8 — 1 7/8 — 1 1/2 — 1 5/8 — 1 3/4 — — — 1 5/16 2 — 2 1/16 — 2 1/16
24	80BS24	8.200	1/4	10.8	1 — — 1 3/16 — 1 1/4 — 1 3/8 — 1 7/8 — 1 1/2 — 1 5/8 — 1 3/4 — — — 1 5/16 2 — 2 1/16 — 2 1/16
25	80BS25	8.520	1/4	11.4	1 — — 1 3/16 — 1 1/4 — 1 3/8 — 1 7/8 — 1 1/2 — 1 5/8 — 1 3/4 — — — 1 5/16 2 — 2 1/16 — 2 1/16
26	80BS26	8.840	2	14.0	1 1/4 — 1 3/8 — 1 7/8 — 1 1/2 — 1 5/8 — 1 3/4 — — — 1 5/16 2 — 2 1/16 — 2 1/16 — 2 5/16
27	80BS27	9.160	2	14.7	1 1/4 — 1 3/8 — 1 7/8 — 1 1/2 — 1 5/8 — 1 3/4 — — — 1 5/16 2 — 2 1/16 — 2 1/16 — 2 5/16
28	80BS28	9.480	2	15.3	1 1/4 — 1 3/8 — 1 7/8 — 1 1/2 — 1 5/8 — 1 3/4 — — — 1 5/16 2 — 2 1/16 — 2 1/16 — 2 5/16
29	80BS29	9.800	2	16.4	1 1/4 — 1 3/8 — 1 7/8 — 1 1/2 — 1 5/8 — 1 3/4 — — — 1 5/16 2 — 2 1/16 — 2 1/16 — 2 5/16
30	80BS30	10.110	2	16.7	1 1/4 — 1 3/8 — 1 7/8 — 1 1/2 — 1 5/8 — 1 3/4 — — — 1 5/16 2 — 2 1/16 — 2 1/16 — 2 5/16
31	80BS31	10.430	2	18.0	1 1/4 — 1 3/8 — 1 7/8 — 1 1/2 — 1 5/8 — 1 3/4 — — — 1 5/16 2 — 2 1/16 — 2 1/16 — 2 5/16
32	80BS32	10.750	2	18.8	1 1/4 — 1 3/8 — 1 7/8 — 1 1/2 — 1 5/8 — 1 3/4 — — — 1 5/16 2 — 2 1/16 — 2 1/16 — 2 5/16
33	80BS33	10.070	2	18.9	1 1/4 — 1 3/8 — 1 7/8 — 1 1/2 — 1 5/8 — 1 3/4 — — — 1 5/16 2 — 2 1/16 — 2 1/16 — 2 5/16
34	80BS34	11.390	2	20.6	1 1/4 — 1 3/8 — 1 7/8 — 1 1/2 — 1 5/8 — 1 3/4 — — — 1 5/16 2 — 2 1/16 — 2 1/16 — 2 5/16
35	80BS35	11.710	2	21.4	1 1/4 — 1 3/8 — 1 7/8 — 1 1/2 — 1 5/8 — 1 3/4 — — — 1 5/16 2 — 2 1/16 — 2 1/16 — 2 5/16
36	80BS36	12.030	2	22.4	1 1/4 — 1 3/8 — 1 7/8 — 1 1/2 — 1 5/8 — 1 3/4 — — — 1 5/16 2 — 2 1/16 — 2 1/16 — 2 5/16
37	80BS37	12.350	2	23.9	1 1/4 — 1 3/8 — 1 7/8 — 1 1/2 — 1 5/8 — 1 3/4 — — — 1 5/16 2 — 2 1/16 — 2 1/16 — 2 5/16
38	80BS38	12.670	2	24.0	1 1/4 — 1 3/8 — 1 7/8 — 1 1/2 — 1 5/8 — 1 3/4 — — — 1 5/16 2 — 2 1/16 — 2 1/16 — 2 5/16
39	80BS39	12.990	2	24.9	1 1/4 — 1 3/8 — 1 7/8 — 1 1/2 — 1 5/8 — 1 3/4 — — — 1 5/16 2 — 2 1/16 — 2 1/16 — 2 5/16
40	80BS40	13.310	2	26.0	1 1/4 — 1 3/8 — 1 7/8 — 1 1/2 — 1 5/8 — 1 3/4 — — — 1 5/16 2 — 2 1/16 — 2 1/16 — 2 5/16
41	80BS41	13.630	2	27.1	1 1/4 — 1 3/8 — 1 7/8 — 1 1/2 — 1 5/8 — 1 3/4 — — — 1 5/16 2 — 2 1/16 — 2 1/16 — 2 5/16
42	80BS42	13.940	2	28.0	1 1/4 — 1 3/8 — 1 7/8 — 1 1/2 — 1 5/8 — 1 3/4 — — — 1 5/16 2 — 2 1/16 — 2 1/16 — 2 5/16
43	80BS43	14.260	2	29.3	1 1/4 — 1 3/8 — 1 7/8 — 1 1/2 — 1 5/8 — 1 3/4 — — — 1 5/16 2 — 2 1/16 — 2 1/16 — 2 5/16
44	80BS44	14.580	2	29.3	1 3/8 — 1 7/8 — 1 1/2 — 1 5/8 — 1 3/4 — — — 1 5/16 2 — 2 1/16 — 2 1/16 — 2 5/16
45	80BS45	14.900	2	30.7	1 3/8 — 1 7/8 — 1 1/2 — 1 5/8 — 1 3/4 — — — 1 5/16 2 — 2 1/16 — 2 1/16 — 2 5/16
46	80BS46	15.220	2	32.4	1 3/8 — 1 7/8 — 1 1/2 — 1 5/8 — 1 3/4 — — — 1 5/16 2 — 2 1/16 — 2 1/16 — 2 5/16
47	80BS47	15.540	2	33.3	1 3/8 — 1 7/8 — 1 1/2 — 1 5/8 — 1 3/4 — — — 1 5/16 2 — 2 1/16 — 2 1/16 — 2 5/16
48	80BS48	15.860	2	34.8	1 3/8 — 1 7/8 — 1 1/2 — 1 5/8 — 1 3/4 — — — 1 5/16 2 — 2 1/16 — 2 1/16 — 2 5/16
49	80BS49	16.180	2	35.1	1 3/8 — 1 7/8 — 1 1/2 — 1 5/8 — 1 3/4 — — — 1 5/16 2 — 2 1/16 — 2 1/16 — 2 5/16
50	80BS50	16.500	2	36.6	1 3/8 — 1 7/8 — 1 1/2 — 1 5/8 — 1 3/4 — — — 1 5/16 2 — 2 1/16 — 2 1/16 — 2 5/16
51	80BS51	16.810	2	38.5	1 3/8 — 1 7/8 — 1 1/2 — 1 5/8 — 1 3/4 — — — 1 5/16 2 — 2 1/16 — 2 1/16 — 2 5/16
52	80BS52	17.130	2	40.3	1 3/8 — 1 7/8 — 1 1/2 — 1 5/8 — 1 3/4 — — — 1 5/16 2 — 2 1/16 — 2 1/16 — 2 5/16
53	80BS53	17.450	2	42.2	1 3/8 — 1 7/8 — 1 1/2 — 1 5/8 — 1 3/4 — — — 1 5/16 2 — 2 1/16 — 2 1/16 — 2 5/16
54	80BS54	17.770	2	44.0	1 3/8 — 1 7/8 — 1 1/2 — 1 5/8 — 1 3/4 — — — 1 5/16 2 — 2 1/16 — 2 1/16 — 2 5/16
55	80BS55	18.090	2	46.3	1 3/8 — 1 7/8 — 1 1/2 — 1 5/8 — 1 3/4 — — — 1 5/16 2 — 2 1/16 — 2 1/16 — 2 5/16
56	80BS56	18.410	2	47.3	1 3/8 — 1 7/8 — 1 1/2 — 1 5/8 — 1 3/4 — — — 1 5/16 2 — 2 1/16 — 2 1/16 — 2 5/16
57	80BS57	18.730	2	18.9	1 3/8 — 1 7/8 — 1 1/2 — 1 5/8 — 1 3/4 — — — 1 5/16 2 — 2 1/16 — 2 1/16 — 2 5/16
58	80BS58	19.040	2	50.6	1 3/8 — 1 7/8 — 1 1/2 — 1 5/8 — 1 3/4 — — — 1 5/16 2 — 2 1/16 — 2 1/16 — 2 5/16
59	80BS59	19.360	2	52.2	1 3/8 — 1 7/8 — 1 1/2 — 1 5/8 — 1 3/4 — — — 1 5/16 2 — 2 1/16 — 2 1/16 — 2 5/16
60	80BS60	19.680	2	58.8	1 3/8 — 1 7/8 — 1 1/2 — 1 5/8 — 1 3/4 — — — 1 5/16 2 — 2 1/16 — 2 1/16 — 2 5/16

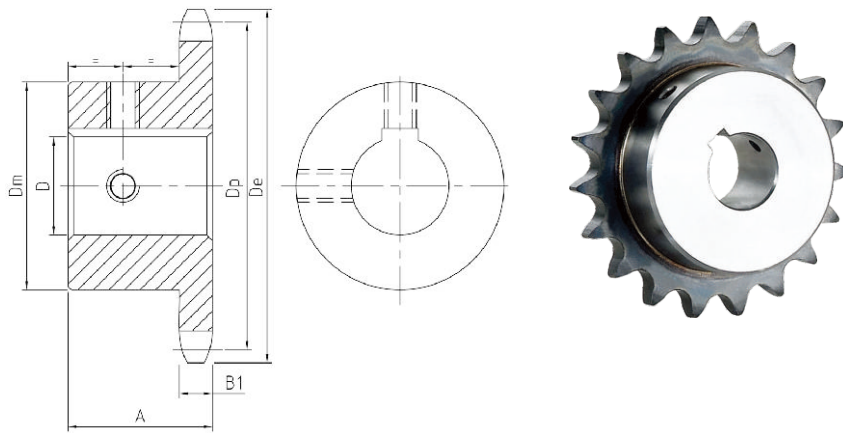
Finished Bore Sprockets

Hub diameters vary to suit different bore sizes.
 ★W=Winch Sprockets-KW 5/16x 5/32=S.S. at 90°

NOTE:KEYWAY IS ON CENTER LINE OF TOOTH.

No.80 | Finished Bore Sprockets

- Pitch 1"
- Roller ϕ 0.625"
- Tooth width B1 0.575"



TYPE BS

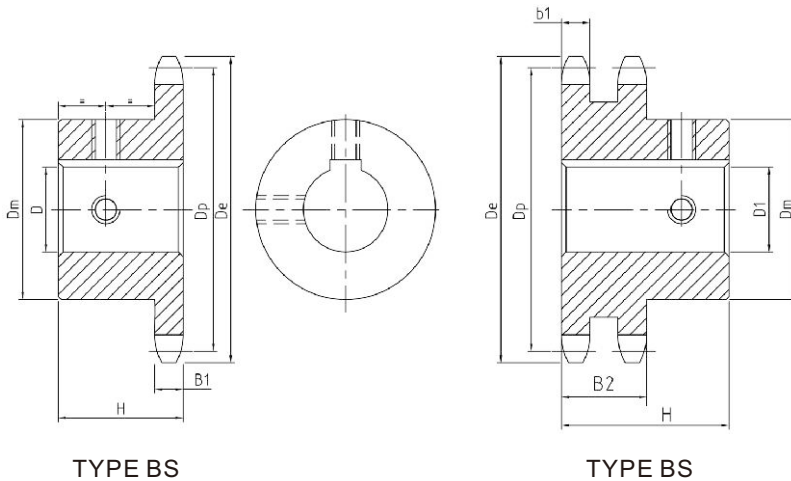
No.80-Hardened Teeth-2 Setscrews

No. Teeth	Part Number	De	H	Weight Lbs. (Approx)	Stock Finished Bores Includes Keyway and 2 Setscrews
9	80BS9HT	3.350	1 ⁷ / ₈	1.6	1 - 1 ¹ / ₈ - 1 ¹ / ₁₆ - 1 ¹ / ₄
10	80BS10HT	3.368	1 ⁷ / ₈	1.7	1 - 1 ¹ / ₈ - 1 ¹ / ₁₆ - 1 ¹ / ₄
11	80BS11HT	4.010	1 ⁷ / ₈	1.8	1 - 1 ¹ / ₈ - 1 ¹ / ₁₆ - 1 ¹ / ₄ - 1 ³ / ₈ - 1 ⁷ / ₁₆ - 1 ¹ / ₂ - 1 ⁵ / ₈
12	80BS12HT	4.330	1 ⁷ / ₈	3.0	1 - 1 ¹ / ₈ - 1 ¹ / ₁₆ - 1 ¹ / ₄ - 1 ³ / ₈ - 1 ⁷ / ₁₆ - 1 ¹ / ₂ - 1 ⁵ / ₈ - 1 ³ / ₄
13	80BS13HT	4.660	1 ⁷ / ₂	3.5	1 - 1 ¹ / ₈ - 1 ¹ / ₁₆ - 1 ¹ / ₄ - 1 ³ / ₈ - 1 ⁷ / ₁₆ - 1 ¹ / ₂ - 1 ⁵ / ₈ - 1 ³ / ₄ - 1 ⁷ / ₈ - 1 ⁵ / ₁₆ - 2
14	80BS14HT	4.980	1 ⁷ / ₂	4.1	1 - 1 ¹ / ₈ - 1 ¹ / ₁₆ - 1 ¹ / ₄ - 1 ³ / ₈ - 1 ⁷ / ₁₆ - 1 ¹ / ₂ - 1 ⁵ / ₈ - 1 ³ / ₄ - 1 ⁷ / ₈ - 1 ⁵ / ₁₆ - 2
15	80BS15HT	5.300	1 ⁷ / ₂	5.2	1 - 1 ¹ / ₈ - 1 ¹ / ₁₆ - 1 ¹ / ₄ - 1 ³ / ₈ - 1 ⁷ / ₁₆ - 1 ¹ / ₂ - 1 ⁵ / ₈ - 1 ³ / ₄ - 1 ⁷ / ₈ - 1 ⁵ / ₁₆ - 2
16	80BS16HT	5.630	1 ⁷ / ₂	6.1	1 - 1 ¹ / ₄ - 1 ³ / ₈ - 1 ⁷ / ₁₆ - 1 ¹ / ₂ - 1 ⁵ / ₈ - 1 ³ / ₄ - - - 1 ⁵ / ₁₆ - 2
17	80BS17HT	5.950	1 ⁷ / ₂	7.0	1 - 1 ¹ / ₄ - 1 ³ / ₈ - 1 ⁷ / ₁₆ - 1 ¹ / ₂ - 1 ⁵ / ₈ - 1 ³ / ₄ - - 1 ⁵ / ₁₆ - 2 - 2 ⁷ / ₁₆
18	80BS18HT	6.270	1 ⁷ / ₂	7.8	1 - 1 ¹ / ₄ - 1 ³ / ₈ - 1 ⁷ / ₁₆ - 1 ¹ / ₂ - 1 ⁵ / ₈ - 1 ³ / ₄ - - 1 ⁵ / ₁₆ - 2 - 2 ⁷ / ₁₆
19	80BS19HT	6.590	1 ⁷ / ₂	8.3	- 1 ¹ / ₄ - 1 ³ / ₈ - 1 ⁷ / ₁₆ - 1 ¹ / ₂ - 1 ⁵ / ₈ - 1 ³ / ₄ - - 1 ⁵ / ₁₆ - 2 - 2 ⁷ / ₁₆
20	80BS20HT	6.910	1 ⁷ / ₂	9.5	- 1 ¹ / ₄ - 1 ³ / ₈ - 1 ⁷ / ₁₆ - 1 ¹ / ₂ - 1 ⁵ / ₈ - 1 ³ / ₄ - - 1 ⁵ / ₁₆ - 2 - 2 ⁷ / ₁₆

NOTE:KEYWAY IS ON CENTER LINE OF TOOTH.

No.80 | Finished Bore Sprockets

- Pitch 1" Roller ϕ 0.625"
- Tooth width b1 0.557" Tooth width B1 0.575"
- Tooth width B2 1.710"



Single Type BS Winch-2 Setscrews

No. Teeth	Part Number	De	H	Weight Lbs. (Approx)	Stock Finished Bores Includes Keyway (see Footnote) and Screw at 90 from Keyway
10	80BS10W	3.680	1 ¹ / ₈	1.7	1 ¹ / ₄
11	80BS11W	4.010	1 ¹ / ₈	1.8	1 ¹ / ₄
12	80BS12W	4.330	1 ¹ / ₈	3.0	1 ¹ / ₄
15	80BS15W	5.300	1 ¹ / ₂	5.2	1 ¹ / ₄
18	80BS18W	6.270	1 ¹ / ₂	7.8	1 ¹ / ₄ — 1 ¹ / ₂

KEYWAY IS ON CENTER LINE OF TOOTH.

Double Type BS Winch(Hardened Teeth)-2 Setscrews

No. Teeth	Part Number	De	H	Weight Lbs. (Approx)	Stock Finished Bores Includes Keyway (see Footnote) and Screw at 90 from Keyway
12	D80BS12HW	3.680	2 ¹ / ₂	5.2	1 ¹ / ₄ — 1 ¹ / ₂ — 1 ³ / ₄
15	D80BS15HW	5.300	2 ¹ / ₂	9.2	1 ¹ / ₄ — 1 ¹ / ₂ — 1 ³ / ₄
18	D80BS18HW	6.270	2 ³ / ₄	13.5	1 ¹ / ₂ — 1 ³ / ₄ — 2
20	D80BS20HW	6.910	2 ³ / ₄	16.2	1 ¹ / ₂ — 1 ³ / ₄ — 2
24	D80BS24HW	8.200	2 ³ / ₄	23.2	1 ¹ / ₂ — 2

Footnote: 1¹/₄" bore has a 5¹/₁₆ x 5¹/₃₂" Keyway, set screw at 90° from keyway

Footnote: 1¹/₂" bore has a 5¹/₁₆ x 5¹/₃₂" Keyway, set screw at 90° from keyway

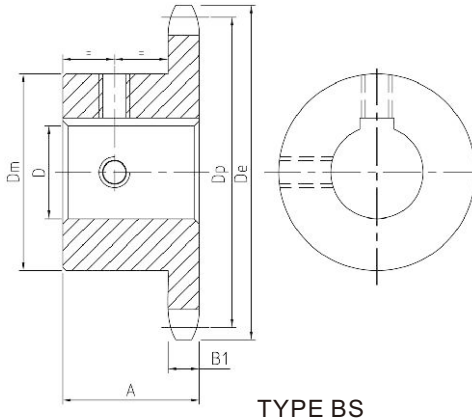
Footnote: 1³/₄" bore has a 3¹/₈ x 3¹/₁₆" Keyway, set screw at 90° from keyway

Footnote: 2" bore has a 3¹/₈ x 3¹/₁₆" Keyway, set screw at 90° from keyway

KEYWAY IS ON CENTER LINE OF TOOTH.

No.100 | Finished Bore Sprockets

- Pitch **1 1/4"** Roller ϕ **0.750"**
- Tooth width B1 **0.692"**



Single Type BS-2 Setscrews-Bored To Size

No. Teeth	Part Number	De	H	Weight Lbs. (Approx)	Stock Finished Bores Includes Keyway and 2 Setscrews
8	100BS8	3.770	17/8	2.8	1 - 1 3/16 - 1 1/4
9	100BS9	4.180	17/8	3.0	1 - 1 3/16 - 1 1/4 - 17/16
10	100BS10	4.600	17/8	3.9	1 - 1 3/16 - 1 1/4 - 17/16
11	100BS11	5.010	17/8	4.9	1 - 1 3/16 - 1 1/4 - 17/16 - 1 15/16 - 2 - 2 1/16
12	100BS12	5.420	17/8	6.0	1 - 1 3/16 - 1 1/4 - 17/16 - 1 15/16 - 2 - 2 1/16
13	100BS13	5.820	1 5/8	6.2	- 1 3/16 - 1 1/4 - 17/16 - 1 15/16 - 2 - 2 1/16
14	100BS14	6.230	1 5/8	6.6	- 1 1/4 - 17/16 - 1 15/16 - 2 - 2 1/16
15	100BS15	6.630	1 3/4	8.4	- 1 1/4 - 17/16 - 1 15/16 - 2 - 2 1/16
16	100BS16	7.030	1 3/4	9.0	- 17/16 - 1 15/16 - 2 - 2 1/16 - 2 1/16 - 2 5/16
17	100BS17	7.440	1 3/4	9.9	- 17/16 - 1 15/16 - 2 - 2 1/16 - 2 1/16 - 2 5/16
18	100BS18	7.840	1 3/4	10.6	- 17/16 - 1 15/16 - 2 - 2 1/16 - 2 1/16 - 2 5/16
19	100BS19	8.240	2	12.1	- 17/16 - 1 15/16 - 2 - 2 1/16 - 2 1/16 - 2 5/16
20	100BS20	8.640	2	13.2	- 17/16 - 1 15/16 - 2 - 2 1/16 - 2 1/16 - 2 5/16
21	100BS21	9.040	2	14.3	- 17/16 - 1 15/16 - 2 - 2 1/16 - 2 1/16 - 2 5/16
22	100BS22	9.440	2	15.1	- 17/16 - 1 15/16 - 2 - 2 1/16 - 2 1/16 - 2 5/16
23	100BS23	9.840	2	16.1	- 17/16 - 1 15/16 - 2 - 2 1/16 - 2 1/16 - 2 5/16
24	100BS24	10.250	2	18.1	- 17/16 - 1 15/16 - 2 - 2 1/16 - 2 1/16 - 2 5/16
25	100BS25	10.650	2	18.4	- 17/16 - 1 15/16 - 2 - 2 1/16 - 2 1/16 - 2 5/16

Hub diameters vary to suit different bore sizes.

NOTE: KEYWAY IS ON CENTER LINE OF TOOTH.

STANDARD KEYWAYS AND SETSCREWS

Diameter of Shaft	Keyway Width X Depth	Setscrew	Diameter of Shaft	Keyway Width X Depth	Setscrew
1/2 - 9/16	1/8 X 1/16	10-24	2 5/16 - 2 1/4	5/8 X 5/16	5/8 ★
5/8 - 7/8	3/16 X 3/32	1/4	1 3/16 - 3/4	3/4 X 3/8	5/8 ★
1 5/16 - 1 1/4	1/4 X 1/8	5/16	3 5/16 - 3 3/4	7/8 X 7/16	3/4
1 3/16 - 1 3/8	5/16 X 5/32	5/16	3 3/16 - 4 1/2	1 X 1/2	3/4
1 7/16 - 1 3/4	3/8 X 3/16	3/8	4 9/16 - 5 1/2	1/4 X 5/8	3/4
1 3/16 - 2 1/4	1/2 X 1/4	1/2 ★	5 9/16 - 6 1/2	1 1/2 X 3/4	3/4

STANDARD BORE TOLERANCES

1" and Less	+ .001-.000
1 1/16" to 2"	+ .002-.000
2 1/16" to 3"	+ .003-.000
3 1/16" & up	+ .004-.000

Bores with closer tolerances will be supplied at a slight increase in price.

★ Hub size may require smaller setscrews in some instances.